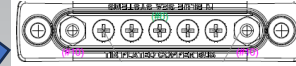
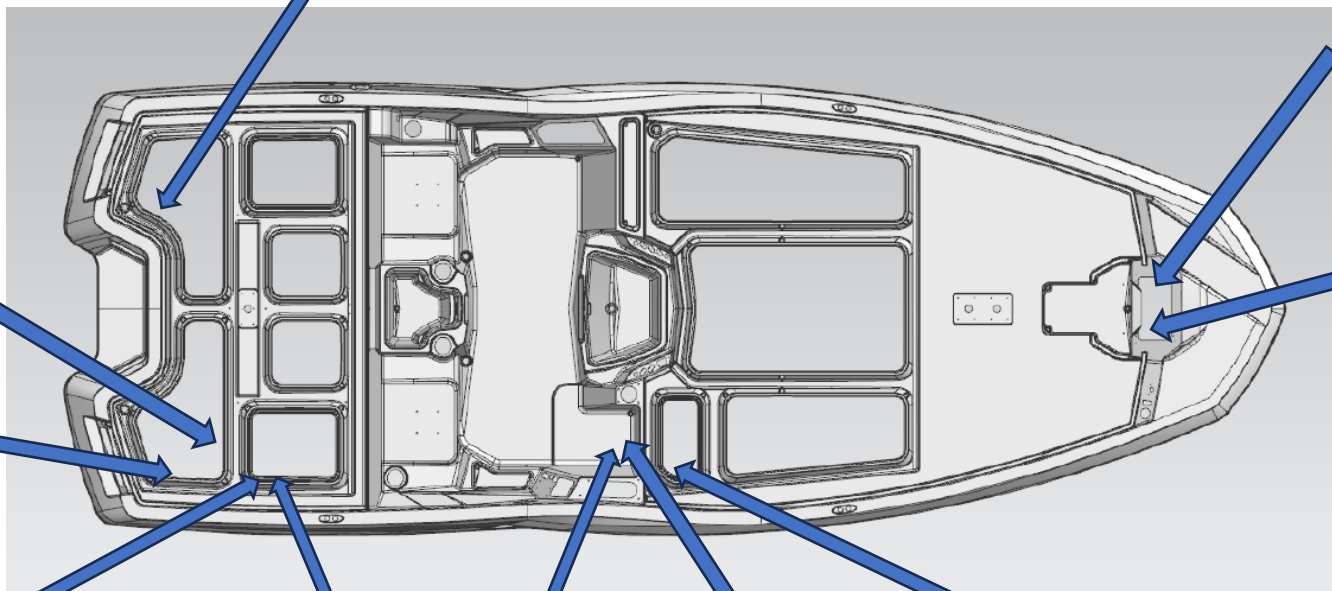


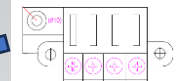
- POS. PORT ANCHOR FD
- NEG. ANCHOR FD
- POS. STBD ANCHOR FD

- (7A) DISPLAY POWER
- (7A) PRIVATE CAN
- (5A) NMEA 2000
- (10A) USB OUTLETS
- (10A) 12V OUTLETS
- (5A) HORN
- (20A) LIVEWELL COMPRSR
- (15A) STEREO
- (10A) AUTO BILGE
- (70A) PDM STBD
- (70A) PDM PORT
- (40A) JACK-PLATE
- (40A) ANCHOR STBD
- (40A) ANCHOR PORT
- (15A) RGB CNTRL
- (30A) ACCY 1
- (20A) ACCY 2
- (10A) ACCY 3
- (60A) TROLLING MOTOR

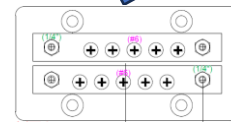
- (5A) CLEAN
POWER FUSE



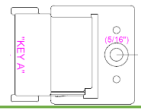
NEG. BUSS FOR
Bow
GRAPHS



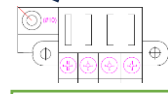
POS. BUSS FOR
Bow
GRAPHS



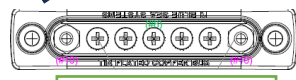
- NEG. ENG START
- NEG. ANCHOR FD
- NEG. TRL MTR BATT
- NEG. 12V BATT
- NEG. TRL MTR FD
- NEG. MAIN GROUND
- NEG. LVWL COMP
- NEG. JACKPLATE FD
- NEG. PORT SEAT HEAT
- NEG. STBD SEAT HEAT
- NEG. PDM FD
- NEG. DASH ELEC



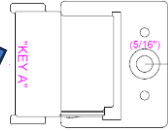
- NEG. AUTO BILGE PUMP
- NEG. PORT REC PUMP
- NEG. LVWL DRAIN PUMP
- NEG. PORT LVWL FILL PUMP
- NEG. LVWL "IV" PUMP
- NEG. LVWL/JP SENSOR
- NEG. MAN BILGE PUMP
- NEG. STBD REC PUMP
- NEG. STBD LVWL FILL PUMP
- NEG. 12V OUT/CHGR FD
- NEG. PORT USB
- NEG. COMPT WENT FAN



POS. BUSS FOR
DASH GRAPHS



NEG. BUSS FOR
DASH GRAPHS



- NEG. HTD STR WHEEL/BLNKR
- NEG. DISPLAY FD
- NEG. PVT CAN FD
- NEG. NAV/ANC LTS
- NEG. RGB CONTROLL
- NEG. DOCKING LTS
- NEG. HORN FD
- NEG. HELM/BOW USB
- NEG. NMEA-2K
- NEG. STEREO FD
- NEG. CTSY/COMPT LTS
- NEG. ACCY