

Carpet Gasket Installation

Prod Phase:

Final Assembly

Applicable Models:

LX 21, LX 20



Revision History

Rev	Author	Date	Changes
0	D. Douglas	5-10-2023	Initial Release.

Carpet Gasket Installation

Prod Phase:





Final Assembly

Applicable Models:

LX 21, LX 20



Tools and Supplies	Parts Needed		
	P/N	Description	QTY
Isopropyl Alcohol	0016292	Gasket .5"W x .625"H D Bulb	40'
Scissors	0016560	Cap SS Gasket Trim	2
5/64" Drill Bit			
#1 Phillips Screwdriver			

Symbols			
Safety Glasses: Required anywhere except office and designated break areas.		CTQ SYMBOL: Indicates items that are critical to safety/quality	
Respirator: Required when symbol is present.			
Gloves: Required when symbol is present.			

Carpet Gasket Installation

Prod Phase:

Final Assembly

Applicable Models:

LX 21, LX 20

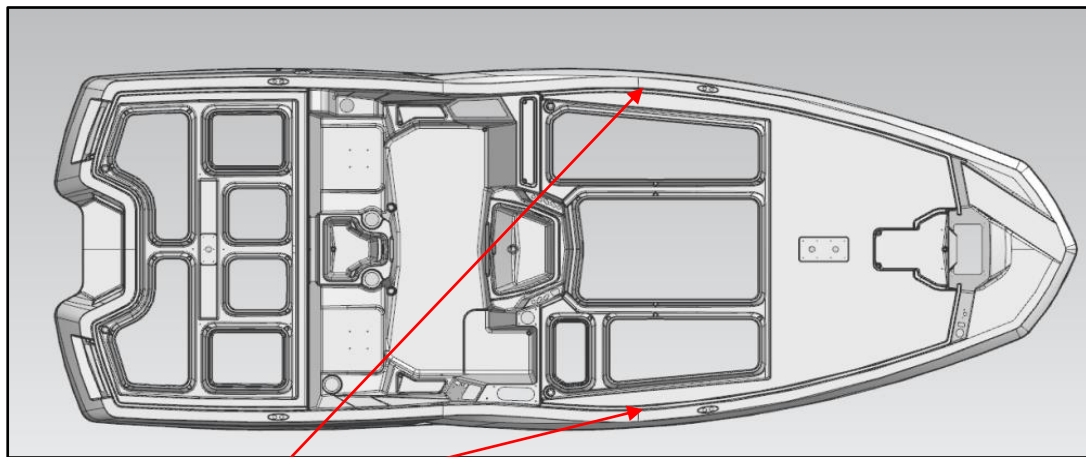
iKON



Step 1

Identify the gasket mounting areas and parts to install.

- Gasket installs in the gutter between the deck carpet and gunnels.



Install in gutter along edge of carpet.



Cap SS Gasket Trim
P/N: 0016560

Carpet Gasket Installation

Prod Phase:

Final Assembly

Applicable Models:

LX 21, LX 20

iKON



Step 2

Wipe the gutters with isopropyl alcohol and a rag.

Step 3

Starting at the bow,

Remove the backing paper and apply the gasket the full length of the gutter.

- Tuck the gasket under the bow trim plate.



Carpet Gasket Installation

Prod Phase:

Final Assembly

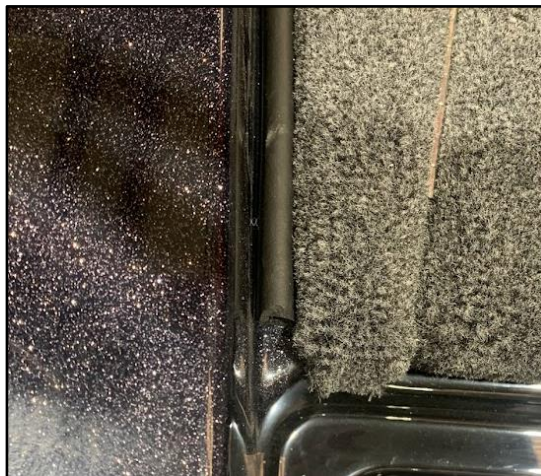
Applicable Models:

LX 21, LX 20

iKON



Step 4
Trim gasket at the end of the gutter.



Step 5
Install an end cap over the trimmed edge.

- Pre-drill and countersink the holes using 5/64” drill bit.
- Install using #1 Phillips screwdriver.

